

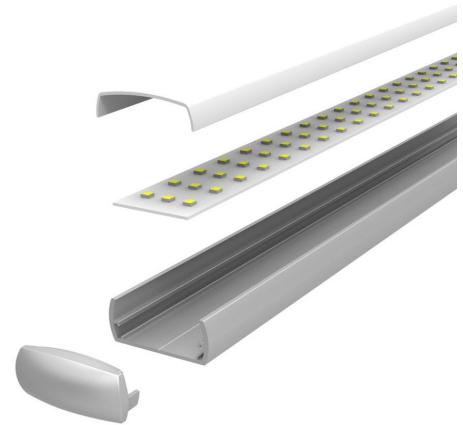
LITEBEND




Litenet Kinetix presents the powerful Linear LITEBEND lighting system. This bending in the vertical plane ideal for arch ways. This lighting system is widely used in shop fit outs, clubs, pubs, hotels or anywhere linear pelmet lighting is required to accentuate a product or space.

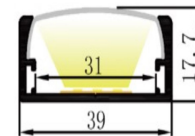
The Litebend is a surface mounted system and have seamless joints and is custom made to almost any lengths in 100 mm increments.

Mounting accessories
Surface mounted clips

50,000hour L70 5 year warranty



-  SMD LED 3000K / 4000K
-  DC24V
-  10-10V, DALI



CLIPS



DIFFUSER



OPAL DIFFUSER

Power	15w/m	20W/m
LED	SMD	SMD
Luminous flux 3K	1200lm	1580lm
Luminous flux 4K	1280lm	1660lm
Dimensions	17.7mm x 39mm	17.7mm x 39mm
Diffuser	Opal	Opal
Beam angles	90°	90°
CRI	90	90
3000K Part No	L15 15803	L15 20803
4000K Part No	L15 15804	L15 20804

